

Security  
Alarm

Components

## Paradox Glass break Detector



### Specifications:

Conventional solid-state relay operation Full audio and infrasonic spectrum analysis.

7 frequency digital filters, digital amplifier gain & frequency fluctuation assessment Impact & shock wave analysis.

High-immunity to RFI and EMI signals.

Adjustable sensitivity: covers up to 9m (30ft) when set to high and up to 4.5m (15ft) when set to low.

## Paradox Pro Plus Motion Detector



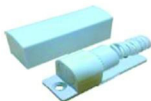
### Specifications:

Extremely high EMI and RFI rejection.

PCB uses only surface mount components.

11m (35ft) X 11m (35ft); 110° viewing angle.

## Vibration Sensor



### Specifications:

Adjustable Sensitivity (Low, Medium, High).

## Magnetic Sensor



### Specifications:

1cm Maximum detection distance.

## Concealed (Recessed) Magnetic Sensor (Size 3/8")



### Specifications:

15mm Maximum detection distance.

## ALEPH Triple-Beam Photoelectric Beam Sensor



### Specifications:

100m Outdoor Distance; 300m Indoor Distance

250m Outdoor Distance; 750m Indoor Distance

Digital Infrared Pulse, Response Time 50 - 700ms; Operating Voltage 13.8-24VDC

## Smoke Detector Sensor



### Specifications:

Comes with test button with light

Cable Connection: 12V+, 12V-, NO, NC, C

## Paradox Outdoor Pet Immune Motion Detector



### Specifications:

Impact and temperature resistant casing (-35C - 50C)

Extremely reliable and false-alarm free

Dual optics (2 dual opposed element sensors) Dual optical filtering system

Multi-level sensitivity adjustment

## Paradox Pet Immune Motion Detector



### Specifications:

Extremely reliable and false-alarm free

Dual optics (2 dual opposed element sensors) Provides superior pet immunity

Immune to pets weighing up to 40kg